

Ashtons



10 Albert Close Acomb YO24 3EU

£995 PCM

2



1



1



D

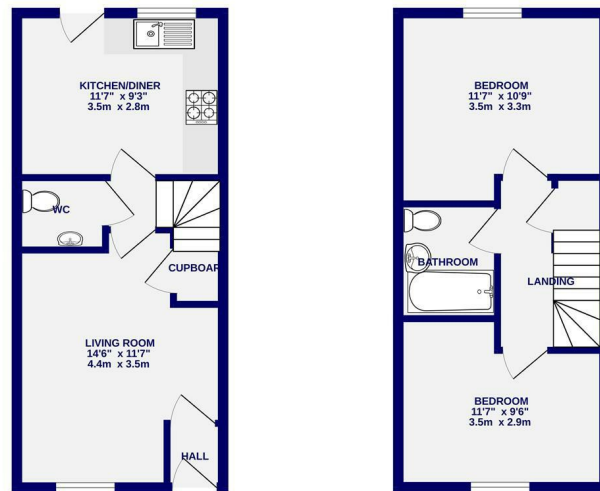




**\*WE ARE NOW FULLY BOOKED ON VIEWINGS FOR THIS PROPERTY\***

A two bedroom townhouse with an allocated parking space, well located in Acomb within minutes walk of high street amenities and local transport links to the city centre. Offered for let on an unfurnished basis the accommodation briefly comprises of entrance hall; living room; downstairs WC; dining kitchen with appliances to include washing machine, fridge freezer, gas hob & electric oven. To the first floor are two double bedrooms, one with wardrobe, and house bathroom with shower over bath. To the rear is a garden. Allocated parking space at the front.

Available 9th June / Deposit £1095 / 12 Month Tenancy / Council Tax Band C / EPC Rating D



TOTAL FLOOR AREA: 617 sq.ft. (57.3 sq.m.) approx.  
Whilst every attempt has been made to ensure the accuracy of the figures, measurements of rooms and any other areas are approximate. Excluded to the plan the proportions will vary due to the nature of the building and the way it is used. The plan is for illustration purposes only and should be used as such by any prospective purchaser. The services, systems and appliances shown have not been tested and no guarantee as to their operation.  
Made with MapInfo 12.0.0.4



Ashtons Lettings



01904 731404



lettings@ashtonsnet.com

